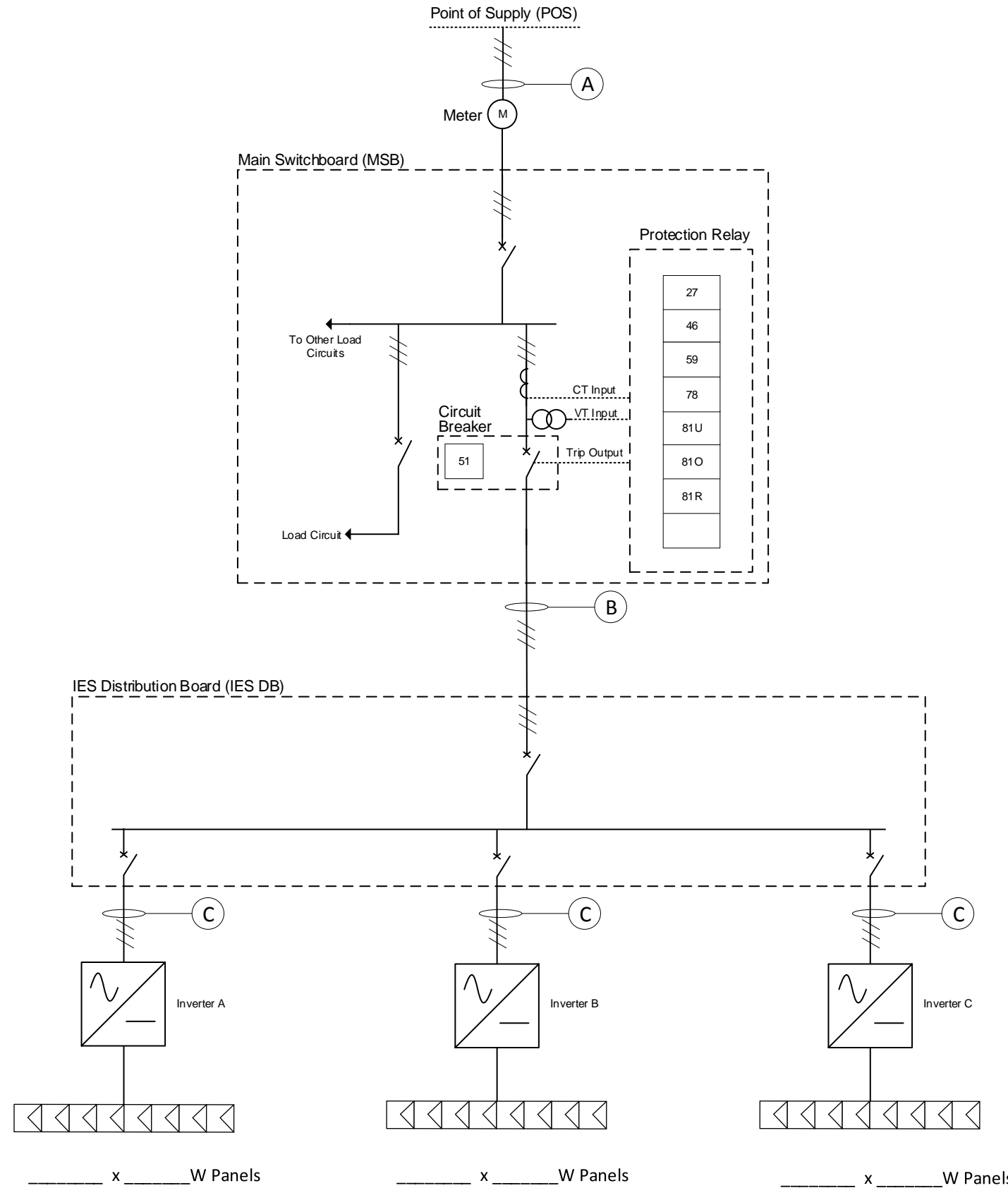


EMBEDDED GENERATOR - SINGLE LINE DIAGRAM (FOR CONSTRUCTION)

Equipment Schedule				
Total System Capacity (kW)				
<small>(Rating of all Inverters)</small>				
Inverter A Details				
Manufacturer				
Model Name				
Model Number				
Rating (kW)				
Quantity				
Inverter B Details				
Manufacturer				
Model Name				
Model Number				
Rating (kW)				
Quantity				
Inverter C Details				
Manufacturer				
Model Name				
Model Number				
Rating (kW)				
Quantity				
Panel Details				
Manufacturer				
Model Name				
Model Number				
Total Number of PV Panels				
Individual Panel Rating (W)				
Total Panel Rating (kW)				
Interconnection Protection Relay Details				
Manufacturer				
Model Name				
Model Number				
Cable Schedule				
Section	Description	Cable Size (mm ²)	Longest Run (m)	Voltage Rise (%)
C	IES TO IES DB			
B	IES DB TO MSB			
A	MSB TO POS			
Total Voltage Rise (%)				



AusNet Services Mandatory Settings		
Volt-Watt Response Set-Point Values		
Reference	Voltage (V)	Power % Rated Power
V1	207	100%
V2	220	100%
V3	253	100%
V4	259	20%
Volt-VAr Response Set-Point Values		
Reference	Voltage (V)	VAr % Rated VA
V1	208	44% (exporting VArS)
V2	220	0%
V3	241	0%
V4	253	44% (sinking VArS)

Interconnection Protection Relay Settings ¹		
Parameter	Setting	Disconnection Time
Overvoltage (59)	260 V	2 sec
Undervoltage (27)	180 V	2 sec
Over Frequency (81O)	52 Hz	2 sec
Under Frequency (81U)	47.5 Hz	2 sec
RoCoF (81R)	2 Hz/s	1 sec
Vector Shift (78)	8 Deg	1 sec
Phase Balance (46) ²	21.7 A	2 sec
Reconnection Delay	60 sec	
<small>1. Refer to SOP 11-16 - Protection Requirements of Embedded Generators <5 MVA</small>		
<small>2. Not applicable when using ONLY AS4777.1 approved three phase inverters</small>		
Inverter Protection Settings		
Parameter	Setting	Disconnection Time
Over-voltage 1 (V>)	260 V	2 sec
Over-voltage 2 (V>>)	265 V	0.2 sec
Sustained operation for voltage variations (V _{nom-max})	258 V	3 sec
Under-voltage (V<)	180 V	2 sec
Over Frequency	52 Hz	0.2 sec
Under Frequency	47 Hz	2 sec
Active anti-islanding or loss of mains (LoM)	-	2 sec
Reconnection Delay	60 sec	

NOTES:

1. This Single Line Diagram is for AusNet Services purposes only. It is not intended for any other purposes and no liability is accepted for any items included or not included as required to meet Statutory or Regulatory compliance.

2. All installation works shall comply with; AS3000, AS3008, AS5033, AS4777, CEC Guidelines, Victorian Service & Installations Rules and all AusNet Services Standard Operating Procedures.

Installation Company		Project Name	
Address		Customer Name	
Contact Number		Supply Address	
Email		Town	
Registered Electrical Contractor		NMI	
		Date	
		Rev	